



A family built this Cape Cod social and recreational hall, complete with an indoor basketball court and luxe locker room, for a range of indoor and outdoor gatherings.

meet us at the cape

A glorious timber frame rises to accommodate family and friends on Cape Cod.

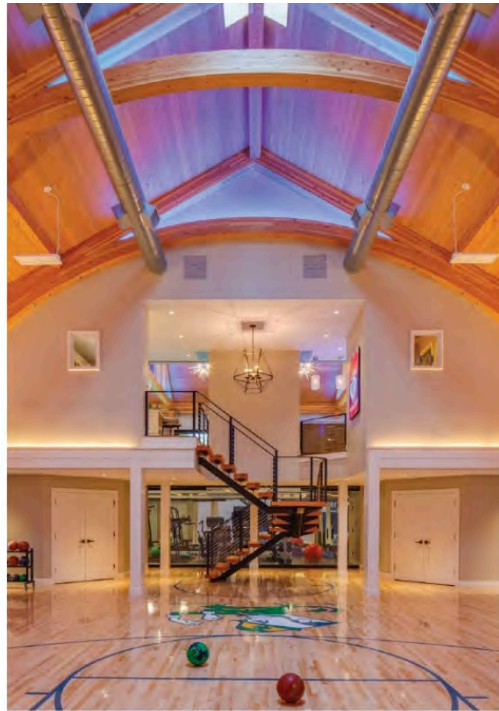
By Michael McCarthy // Photographed by Brian Vanden Brink

The idea was simple: Carve out space for visiting family and friends on the opposite end of a great lawn connected to a Cape Cod house. But getting to this point without upsetting the splendor of the property required architectural vision. So, the homeowners tapped Polhemus Savery DaSilva Architects Builders (PSD) to design and build a structure that would serve as a social and recreational hub—a bright, modern 5,092-square-foot social hall and gym with natural red cedar horizontal shiplap siding.

PSD's design principal John R. DaSilva, FAIA, explains the structure was "conceived to facilitate togetherness through indoor and outdoor multigenerational play, relaxation and exercise. It's hidden away from the street down a long driveway and across the big field, and surrounded on three sides by large trees—a perfect retreat for reconnecting and rejuvenating." (As an integrated architecture and construction firm, PSD served as architect, landscape architect and builder.)

The site is large and featured a derelict carriage house that the homeowners wanted to replace. DaSilva says it was critical for the structure not to overpower the main house or open space on the property. "This was achieved by orienting the long dimension of the barn perpendicular to the main house and using a sweeping pitched roof with large overhangs to allow the barn structure to appear to hug the ground."

What truly makes the social barn special is the use of a timber frame in both the social hall and gym. The soaring frame is crafted from Douglas fir posts and beams—interlocked mortise and tenon—with exposed steel fasteners. The custom trusses serve as visual anchors for interior fixture selections and finishes by Patricia Hessel Interiors. DaSilva says the homeowners were very specific about how the spaces would live. "While, by nature, a gymnasium and a social hall are large spaces, opportunities for intimate interaction were also created in the design," he says. "Both a bar and a kitchen sit under a lower ceiling



adjacent to the social hall. The soft, warm character of the bar top is created through gently textured acrylic that glows with light from within and has the same color wheel feature as the concealed lights above."

The gym features a half basketball court with commercial-grade flooring, a Fighting Irish logo (officially sanctioned by the University of Notre Dame), well-equipped exercise room, luxe locker room with a sauna and custom cabinetry. "It's a retreat within a retreat," says DaSilva.

The longest side of the social hall opens directly to the big lawn. "The hall's north end opens onto a bocce court, and the south end, nearest the bar area, opens onto a terrace that surrounds a fire pit," says DaSilva. "The building touches the lawn with a wraparound pedestal of wood steps. No plantings interrupt this direct connection." The design team also employed a large solar-panel array positioned on the standing-seam metal roof.

Naturally, the homeowners and their guests were thrilled with the results, as the social hall has become a beloved fixture in daily Cape adventures. It's now a space to forge even more memories. "Like the best architecture, it was a collaborative creation between the owners, interior designers and the architect-builders," says DaSilva. ■



The hall, which features lots of outdoor seating, sits at the end of a gorgeous lawn. Opposite page, from top: The gym's structural timber frame rises above the basketball court's commercial-grade flooring; despite an open floor plan created by timber trusses, the social hall and kitchen feel cozy.

design details

TYPE
Social and recreational hall

LOCATION
Cape Cod

ARCHITECT, LANDSCAPE ARCHITECT AND BUILDER
Polhemus Savery DaSilva Architects Builders
psdab.com

INTERIOR DESIGNER
Patricia Hessel Interiors
203.354.4223

resources

3FORM
Chroma, LED edge-lit, resin counter top bar
3form.com

ALL MODERN
Great room Sputnik starburst chandelier
allmodern.com

CT STONES
Stone counters and fireplace surround, Tahiti quartzite, honed finish
connecticutstone.com

HOPE'S
Steel-frame windows and doors
hopeswindows.com

SUB-ZERO AND WOLF
Kitchen and bar appliances
subzero-wolf.com